



Kress Building

\$30.00 /SF/YR

Located in the heart of downtown Orlando's Central Business District, the Historic Kress Building offers a rare opportunity to lease office space in one of the city's most iconic and architecturally significant properties. Originally constructed in 1935 and converted to professional office use in 1985, the building underwent extensive renovations in 2025.

- Turnkey Ready, Prime Downtown Location in the heart of downtown Orlando at the Historic Kress Building. Space available for immediate occupancy.
- Within walking distance to the Orange County Courthouse, City Hall, SunRail, and the Central Business District.
- Convenient access to major highways and public transportation makes commuting easy for employees and clients throughout the Orlando metro area.
- Rental rate includes 6 parking spaces in nearby lots.
- Historic Downtown Orlando landmark with distinctive architectural character including high ceilings and historic details.
- **BROKERS PROTECTED**



Rental Rate: \$30.00 /SF/YR

Min. Divisible: 5 SF

Property Type: Office

Property Subtype: Office/Residential

Building Class: B

Rentable Building Area: 37,000 SF

Year Built: 1924

Walk Score ©: 97 (Walker's Paradise)

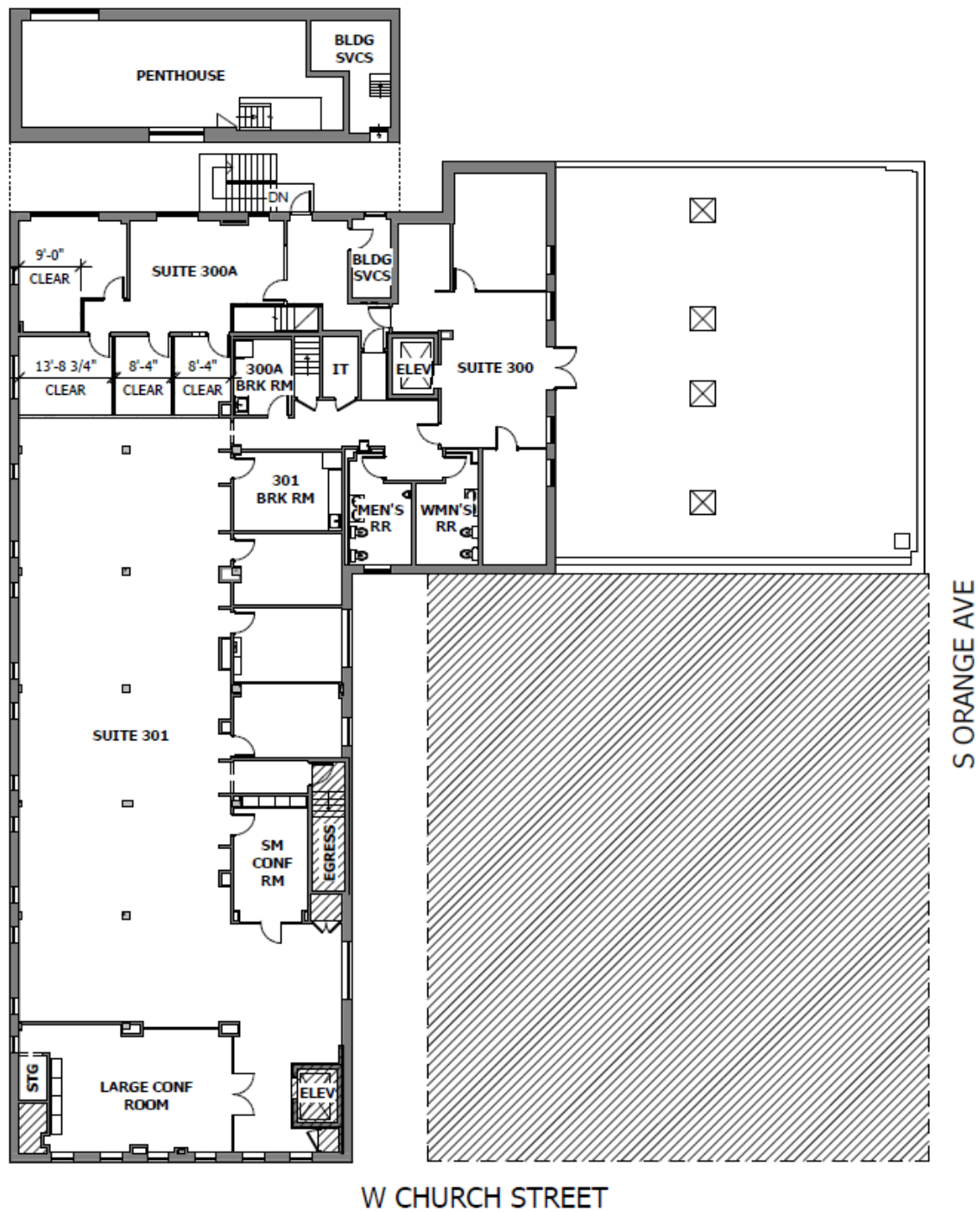
Transit Score ©: 70 (Excellent Transit)

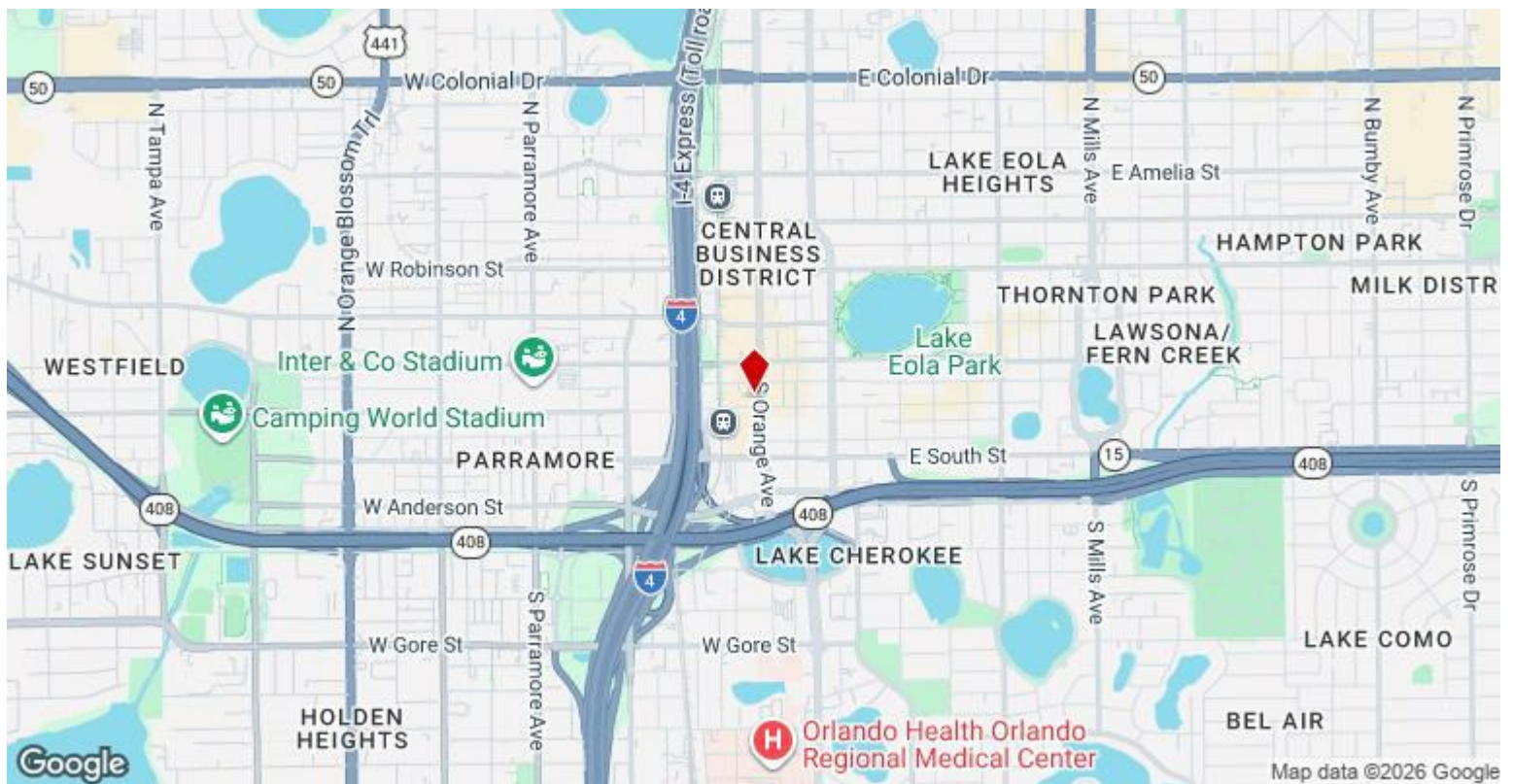
Rental Rate Mo: \$2.50 /SF/MO

3rd Floor

Space Available	5,818 - 8,763 SF
Rental Rate	\$30.00 /SF/YR
Date Available	Now
Service Type	Full Service
Built Out As	Standard Office
Space Use	Office
Lease Term	Negotiable

1





15 W Church St, Orlando, FL 32801

Historic Kress Building in the heart of downtown Orlando's central business district. Built in 1935 and renovated into an office building in 1985, the Kress Building retains many of its original historic architectural details in a building with modern amenities. This premier property offers unique historic character combined with modern functionality, providing a distinctive space for professional offices, creative firms, boutique retail, or service users seeking an elevated downtown presence. The Kres Chophouse at the Church Street entrance gives the office users a great place to dine and entertain clients while staying on site. Both building entrances are access controlled for the security and convenience of our tenants.

Property Photos



Conference Room

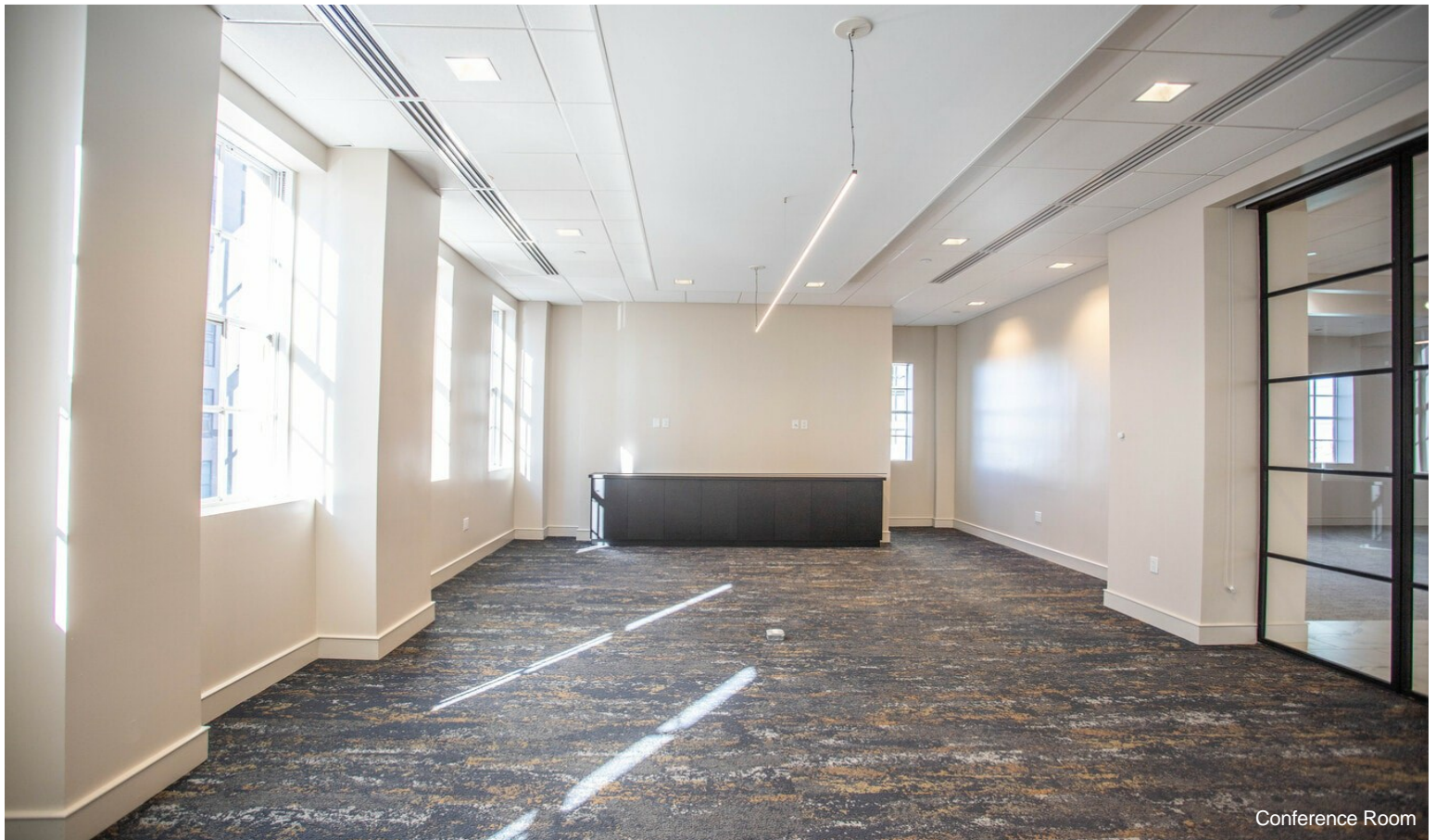
Property Photos



Property Photos



Open Floor Plan

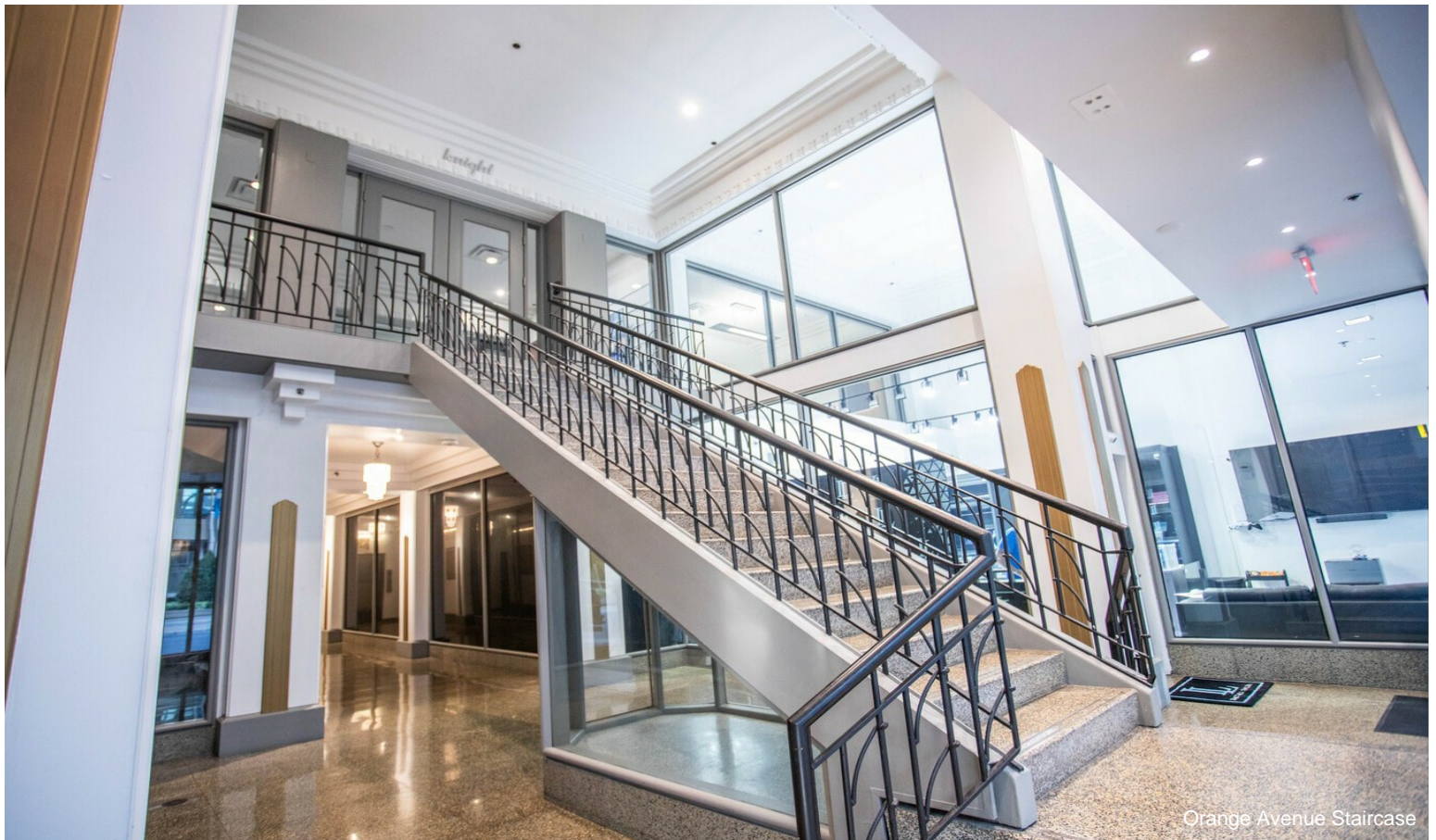


Conference Room

Property Photos



Open Floor Plan



Orange Avenue Staircase



Kress Building

15 W Church St, Orlando, FL 32801



Sharon Lowen

Sullivan Properties, Inc.

130 S Orange Ave, Suite 300, Orlando, FL 32801

sharon.lowen@sullivanpropertiesinc.com

(407) 425-6623